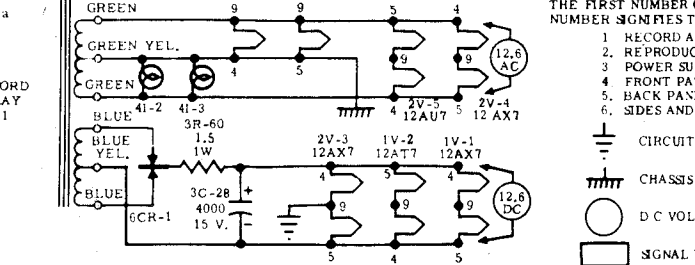
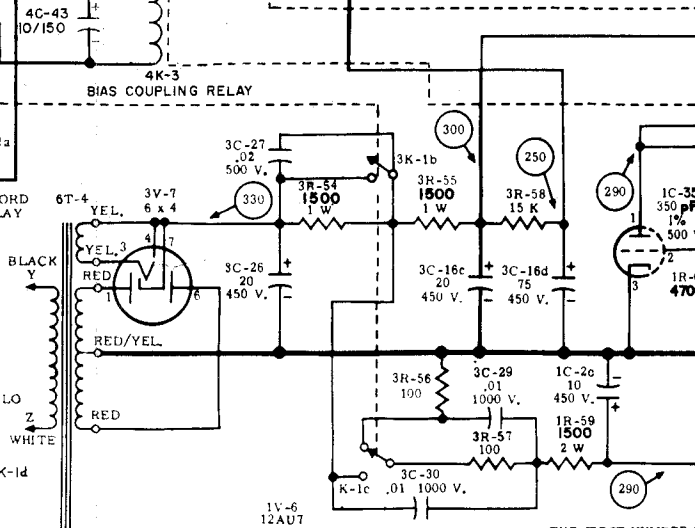
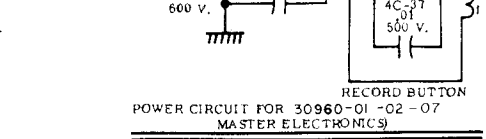
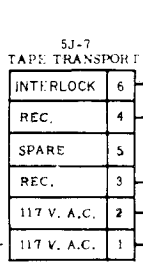
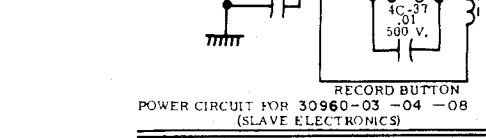
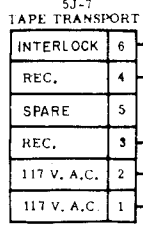


- NOTES:**
1. RESISTOR VALUES ARE IN OHMS 10%, 1/2 WATT UNLESS OTHERWISE SPECIFIED.
 2. ALL CAPACITORS ARE IN MICRO-FARADS AND RATED AT 400 V., UNLESS OTHERWISE SPECIFIED.
 3. SWITCHES ARE SHOWN AS THEY FUNCTION NOT AS THEY ARE CONSTRUCTED AND WIRED.
 4. FOR UNBALANCED OUTPUT WITH ONE SIDE GROUND, CONNECT A TO B AT 5T52 OR PIN 1 TO PIN 2 AT 5J5. FOR BALANCED OUTPUT WITH CENTER TAP GROUND, CONNECT G TO H AT 8T51.
 5. JUMPERS AS SHOWN, VU METER IS CALIBRATED FOR +8 VU OUTPUT, FOR +4 VU OUTPUT JUMP E TO F INSTEAD OF E TO D ON 8T51 (SEE INSTALLATION). READJUST RECORD CALIBRATION CONTROL AS DESCRIBED IN SECTION V OF MAINTENANCE MANUAL.
 6. D.C. VOLTAGES MEASURED WITH 20,000 OHM PER VOLT METER WITH EQUIPMENT IN RECORD MODE AT 117 V. LINE.
 7. SIGNAL VOLTAGES MEASURED WITH AC VTVM AND EXPRESSED IN db REFERRED TO .78 VOLTS.

CIRCUIT CONDITIONS

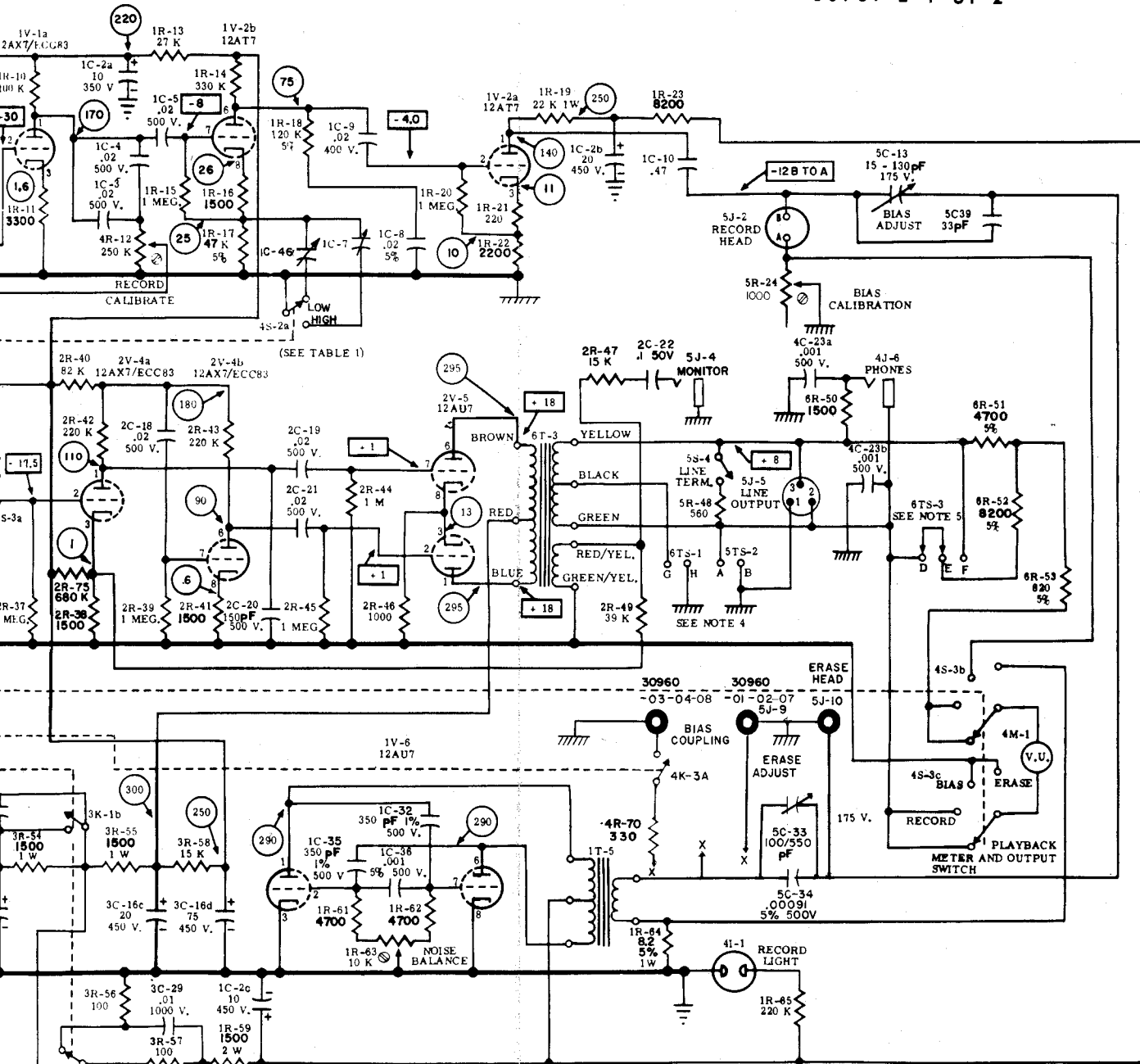
EQUALIZATION SWITCH 4S2 IN 7-1/2" POSITION 500 CYCLE INPUT. LEVEL CONTROLS 4R9 AND 4R36 FULL CLOCKWISE. LINE OUTPUT 5J5 TERMINATED IN NOMINAL 600 OHMS. OSCILLATOR TUBE 1V6 REMOVED. 1,000 OHM RESISTOR SUBSTITUTED FOR RECORD HEAD. INPUT TRANSFER SWITCH 4S1 IN MICROPHONE POSITION. RECORD RELAY 3K1 ENERGIZED.

NOTE: UNBALANCE OF 2 db MAY BE EXPECTED AT PIN 2 AND PIN 7 OF 2V5.



- THE FIRST NUMBER NUMBER SIGNIFIES T
- 1 RECORD A
 - 2 REPRODU
 - 3 POWER SU
 - 4 FRONT PA
 5. BACK PAN
 6. SIDES AND
- CIRCUIT
 CHASSIS
 D.C. VOL
 SIGNAL

ELECTRONIC ASSEMBLY
CATALOG NUMBER 30960-01 thru -04
SCHEMATIC DIAGRAM
30961 E 1 of 2



LEGEND

- THE FIRST NUMBER OF THE SCHEMATIC REFERENCE NUMBER SIGNIFIES THE LOCATION
- 1 RECORD AMPLIFIER BOARD
 - 2 REPRODUCE AMPLIFIER BOARD
 - 3 POWER SUPPLY BOARD
 - 4 FRONT PANEL OF AMPLIFIER CHASSIS
 - 5 BACK PANEL OF AMPLIFIER CHASSIS
 - 6 SIDES AND BOTTOM OF AMPLIFIER CHASSIS
- CIRCUIT GROUND
 - CHASSIS GROUND
 - D C VOLTAGES
 - SIGNAL VOLTAGES

TABLE 1
NAB EQUALIZATION

REF. NO.	MACHINES	
	3-3/4 - 7-1/2	7-1/2 - 15
C-46	780-2110PF	550-1600PF
C-7	550-1600PF	100-550PF
R-30	500K	OMIT - BYPASS S-2C AS SHOWN WITH DOTTED LINE